



SINCE 1952

YOUR RELIABLE SOURCE FOR POLYETHYLENE
AND PVC PRODUCTS SINCE 1952

CONCRETE ACCESSORIES

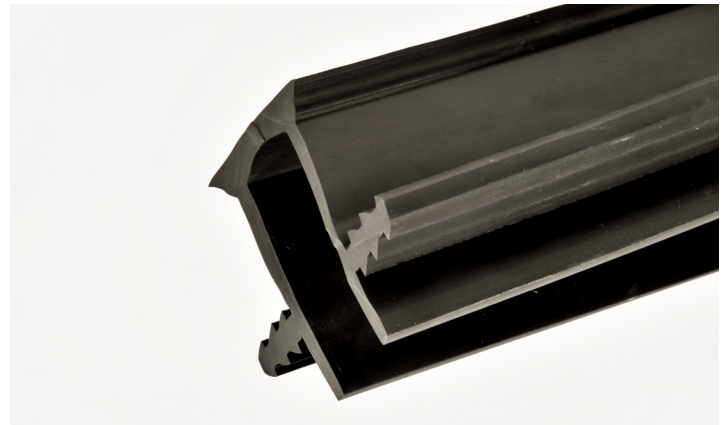
TEX-CAP

DESCRIPTION

Tex-Trude Tex-Cap is a high performance modified PVC Joint Cap, manufactured with advanced flexible virgin resins. Tex-Cap is designed to be installed over expansion board materials, to form a mechanical bond, help stop water and other contaminants from migrating through the joint.

Advantages over traditional joint sealing materials:

- Longer Product Life: typically 10 to 15 years. Other joint materials, 1 to 3 years
- Mechanical Bond, 99 percent less failure, maintenance free
- Lower Cost per liner foot
- Installed prior to concrete pour, no second mobilization
- Expands and contracts with the concrete
- Install at all temperatures
- Abrasion resistant
- Appearance: Aesthetically nice, smooth, and clean joint



SINCE 1952

P.O. BOX 58 CHANNELVIEW, TEXAS 77530
O. 281.452.5961 F. 281.452.5642 WWW.TEX-TRUDE.COM
©TEX-TRUDE 2016 ISO 9001-2015



MADE IN THE U.S.A

INSTALLATION

Install Tex-Cap over the expansion board with a snug fit prior to pouring the concrete. Position the expansion board 1/4 inch below the top of the slab. Install the Tex-Cap over the secured expansion board by using staples under the bottom flange, which will aid holding the joint cap in place during the concrete pour. Some expansion boards may need additional support. Seal the end of the joint cap using industry standard methods.

TECHNICAL DATA

Technical Data Tex-Cap		Tex-Cap
Tensile Strength	ASTM D412	2142
Elongation	ASTM D412-92	377
Abrasion Resistance	ASTM D3884	Weight grams-0.014
Ozone Resistance, 300pphm, 70 hrs. @ 104°F	ASTM D1149	No Cracking Observation made @ 7x magnification
Oil Swell, Volume/Weight	ASTM D471	Volume -6.15% Weight -4.33%
Heat Aging	ASTM D573	280 min
Durometer Hardness	ASTM D2240	83
Results after Heat Aging 24 hrs. @ 70°C	ASTM D573	Tensile Strength Retained: 95.9% min. Elongation Retained: 94.5% min. Hardness Change: 83, no change

LIMITED WARRANTY

Tex-Trude warrants this product to meet the published specifications and to be free of defects in workmanship and materials at the time of shipment from our factory. If any Xtreme material proves to contain manufacture defects that substantially affect the performance, then Tex-Trude will at their option replace the material or refund the purchase price. This limited warranty is the only warranty offered by Tex-Trude, LP as it relates to Xtreme products. There are no other warranties, including the implied warranties of merchantability or fitness for a particular purpose. Tex-Trude specifically disclaims liability for any incidental, consequential, or other damages.



P.O. BOX 58 CHANNELVIEW, TEXAS 77530
O. 281.452.5961 F. 281.452.5642 WWW.TEX-TRUDE.COM
©TEX-TRUDE 2016 ISO 9001-2015



MADE IN THE U.S.A