



SINCE 1952

YOUR RELIABLE SOURCE FOR POLYETHYLENE
AND PVC PRODUCTS SINCE 1952

CONCRETE ACCESSORIES

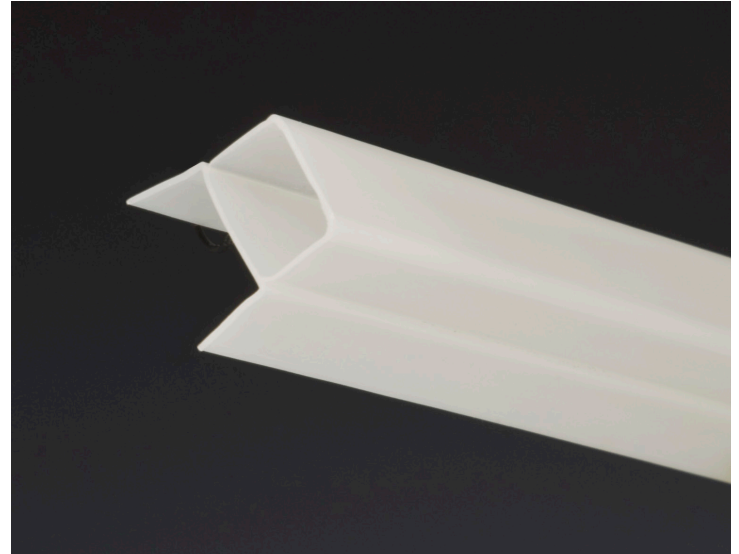
EXPANSION CAPS

Expansion joint caps are polystyrene caps with removable tops. When placed over an expansion joint, the top of the concrete cap snaps off, leaving a clean joint ready for sealing.

Expansion joint caps are available in 1/2" and 3/4" pieces. The 1/2" pieces are 10 ft. long and packaged 100 pieces to a box. The 3/4" pieces are 10 ft. long and packaged 50 pieces to a box.

DETAILS

- Lightweight yet durable
- Time saving and cost effective
- Environmentally accepted
- Acts as a barrier preventing chemical seepage to the concrete surface



EXPANSION CAP SPECIFICATIONS

| | |
|------------|---|
| ASTM D266 | Izod Impact, Notched |
| ASTM D523 | Gloss |
| ASTM D638 | Tensile Strength, Yield Elongation at Break Tensile Modulus |
| ASTM D648 | Deflection Temperature @ 1.8MPa (264psi) |
| ASTM D790 | Flexural Modules Flexural Strength |
| ASTM D1233 | Melt Flow |
| ASTM D1525 | Vicat Softening Point |

