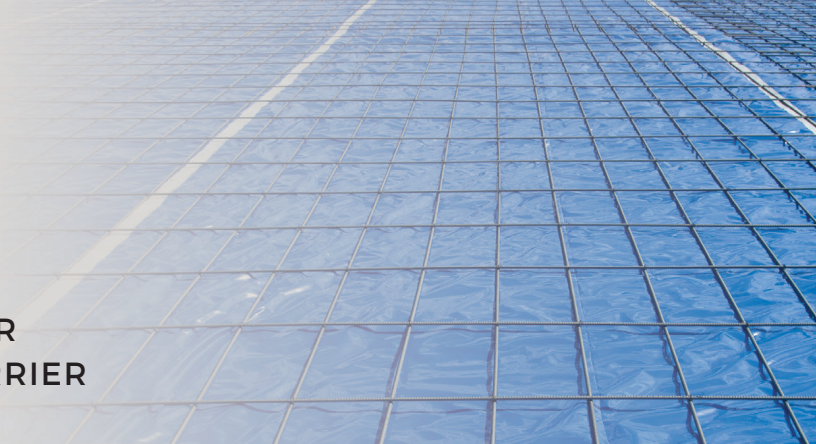




XTREME ACCESSORIES
UNDER CONCRETE SLAB VAPOR BARRIER
MASTER FORMAT #033000 - VAPOR BARRIER



XTREME MASTIC

DESCRIPTION

Tex-Trude Xtreme Mastic is a rapid curing water-based, polymer-modified anionic bituminous/asphalt. Xtreme Mastic is designed to be installed around penetrations (pipes) protruding through the vapor barrier. It is very effective when sealing more than one penetrations that are close together. Xtreme Mastic has an outstanding bond to the Xtreme Vapor Barrier and when used properly helps aid in the protection of concrete from vapor transfer.



INSTALLATION

Prior to installation, perform a visual inspection of the Xtreme Vapor Barrier to insure a 6" overlap has been achieved and the penetration to insure all dust, dirt, debris, moisture has been removed. It is important to apply the Xtreme Mastic liberally on the penetration, forming a monolith coating (minimum of 64 mil thick) attaching the Xtreme Vapor Barrier and the penetration.



P.O. BOX 58 CHANNELVIEW, TEXAS 77530
 O. 281.452.5961 F. 281.452.5642 WWW.TEX-TRUDE.COM
 ©TEX-TRUDE 2016 ISO 9001-2015



Warm conditions: Store out of direct sunlight. Perform normal installation, using industry knowledge of the guidelines for vapor barriers.

Cold conditions: In cold weather applications, it is suggested to condition the Xtreme Mastic 8 hours in a warm environment prior to use. This will help the Xtreme Mastic reach its optimal performance.

TECHNICAL DATA

Technical Data Xtreme Mastic		Packaging Xtreme Mastic	
Thickness	64 mil	Pail	5 gallon
Permeance	0.01	Pails per pallet	36
Tensile Strength	1112 psi	Weight	38 lb each
Elongation	1058.466%	Color	Black
Cold Weather Resistance	Excellent		

LIMITED WARRANTY

Tex-Trude warrants this product to meet the published specifications and to be free of defects in workmanship and materials at the time of shipment from our factory. If any Xtreme material proves to contain manufacture defects that substantially affect the performance, then Tex-Trude will at their option replace the material or refund the purchase price. This limited warranty is the only warranty offered by Tex-Trude, LP as it relates to Xtreme products. There are no other warranties, including the implied warranties of merchantability or fitness for a particular purpose. Tex-Trude specifically disclaims liability for any incidental, consequential, or other damages.



P.O. BOX 58 CHANNELVIEW, TEXAS 77530
O. 281.452.5961 F. 281.452.5642 WWW.TEX-TRUDE.COM
©TEX-TRUDE 2016 ISO 9001-2015



MADE IN THE U.S.A